

WORKFLOW IN LIGHTROOM

Created for Photographers for photo-asset management
Manage + Edit + Export

Modules

Library (G or E) for Organizing, Viewing, rating your images

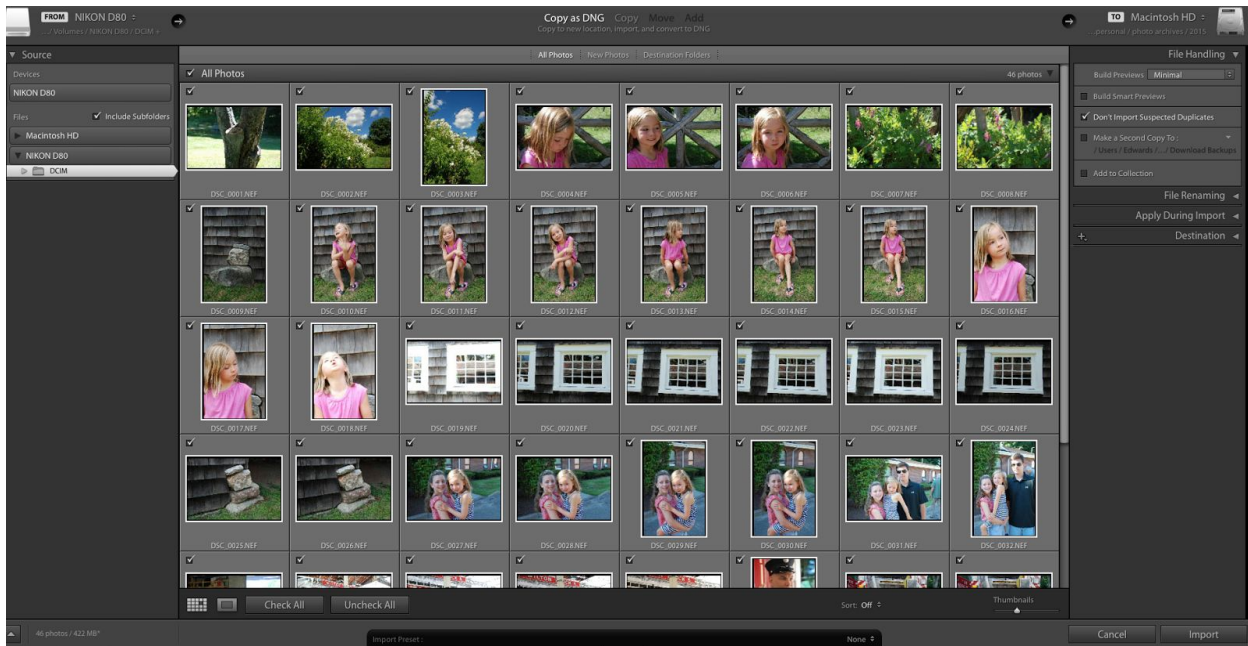
Develop (D) for correcting white balance, exposure, color and details of images

Print (N/A)

Web (N/A)

I. IMPORT

1. Select File>Import or use shift+cmd+i
2. Select Source: Choose device (from your card reader or external device) you would like to import. Check "eject after import"
3. Center: Select copy as a DNG
4. File Handling: check avoid duplicates
5. Apply During Import: Select meta data presets - apply Basic Metadata (mac: option + g) © your name
6. File Renaming: custom name + sequence (cyproject1_1)
7. Destination: Select image location (This is IMPORTANT!!!! Visual Thinking Class Folder> Project or exercise name) You may create a subfolder for each shoot or put into one folder
8. Click Import



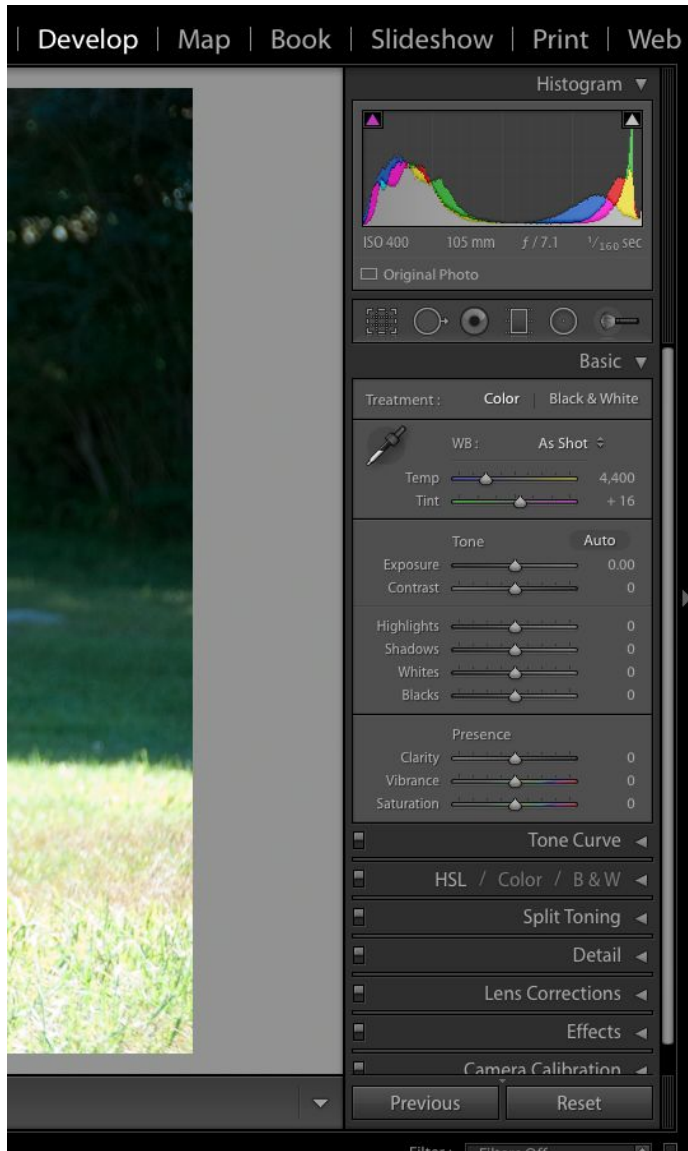


II. ORGANIZE

1. Select the Library Module and choose Grid view (G) / Loupe view (L)
2. In the Folders Panel navigate to your freshly imported folder
3. Note the Tool Bar: here you can select view, sort by preferences, thumbnail sizes, etc

III. DEVELOP

please note that Lightroom uses the same raw engine as Photoshop Camera Raw



1. With your image selected click the Develop module or hit the 'D' key
2. **Physical Correction:** Cropping and Straightening - Get rid of extra data. LOCK ASPECT RATIO (in most cases)
3. **Apply color adjustments** using Temp and Tint if needed: observe histogram and use info tool / or white balance dropper without clicking. There are equal RGB values for something that's supposed to be neutral gray. *Click in temperature field and use eyedropper to monitor, use up and down arrow keys*
4. **Apply tonal adjustments:** Start with Whites or highlight (move slider until holding down OPTION to see clipping). Use eyedropper tool adjust whites (95% white) and Adjust Blacks or shadows if needed (5% black)

1. SET THE HIGHLIGHT AND SHADOWS which affects the brightness and contrast. Start with Whites or highlight (move slider until holding down OPTION to see clipping). Use eyedropper tool adjust whites (95% white)
 2. Adjust Blacks or shadows if needed (5% black)
 3. Midtone data into center adjust overall brightness or contrast slider to spread data out
-
5. If needed minor adjustments of midtones or contrast. (hold down alt or option and slide to see clipping) and/or **Basic Presence adjustments**
 6. **Sharpening and correct for noise** (preview at 100%)

Option: Synchronize settings to other images in your series

- a. In Library select image that is modified
- b. cmd select additional images
- c. in the library module or develop module select "Sync Settings"
- d. select "synchronize"

IV PROCESS: EXPORT

Once all of your Development Corrections have been made. Select images you wish to export
File<Export (Shift + CMD + E Export Photos)

1. Export as a tif if you have under 200 images, otherwise use jpgs
2. Click Export